



BLU RETI GAS s.r.l.

COMUNE DI VEZZA D'OGGIO e VIONE

PROVINCIA DI BRESCIA

PROGETTO DEFINITIVO

Tav.

G.03.04

METANIZZAZIONE

COMUNI DI VEZZA D'OGGIO E VIONE

Posa tubazione gas metano

percorrenza SS n°42 dal Km 127+464 al Km 127+690 - dal Km 127+800 al Km 128+780
attraversamento al Km 127+480 - 127+800 - 127+905 - 127+920 - 128+000 - 128+050 -
128+300 - 128+490 - 128+525 - 128+560 - 128+610 - 128+640 - 128+700 - 128+780 -
130+010 - 130+950 - 131+950 - 132+580

Scala

Data

Dicembre 2020

Commessa n° : 07_2018

SEZIONI TIPO INTERFERENZE S.S.42 E VISTE FOTOGRAFICHE

CUP n° :

Elenco Tavole

ELAB/ TAV	Descrizione	N° Tav	Descrizione
G.03.01	COROGRAFIA GENERALE E PLANIMETRIA D'INQUADRAMENTO		
G.03.02	PLANIMETRIA DI PROGETTO - RETE DI DISTRIBUZIONE VEZZA D'OGGIO		
G.03.03	PLANIMETRIA DI PROGETTO - RETE DI DISTRIBUZIONE VIONE		
G.03.04	SEZIONI TIPO INTERFERENZE S.S.42 E VISTE FOTOGRAFICHE		

AGGIORNAMENTI		Data	Descrizione	Redatto	Controllato	Approvato
	0	Dicembre 2020	Autorizzazione ANAS	Ing. Landrini Girolamo	Ing. Landrini Girolamo	geom. Bonomi Loris
	1					
	2					
	3					

Committente

Progettazione

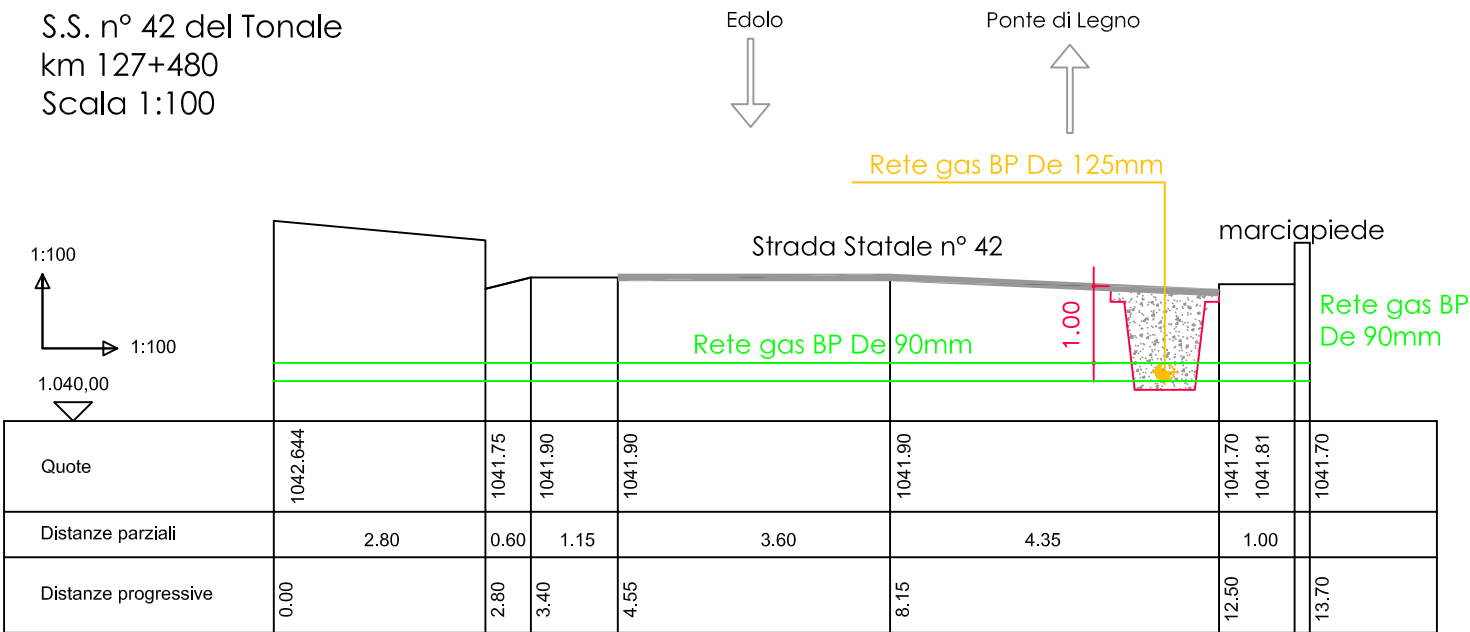


I Tecnici:

Ing. Landrini Girolamo

Ing. Bertoia Giorgio

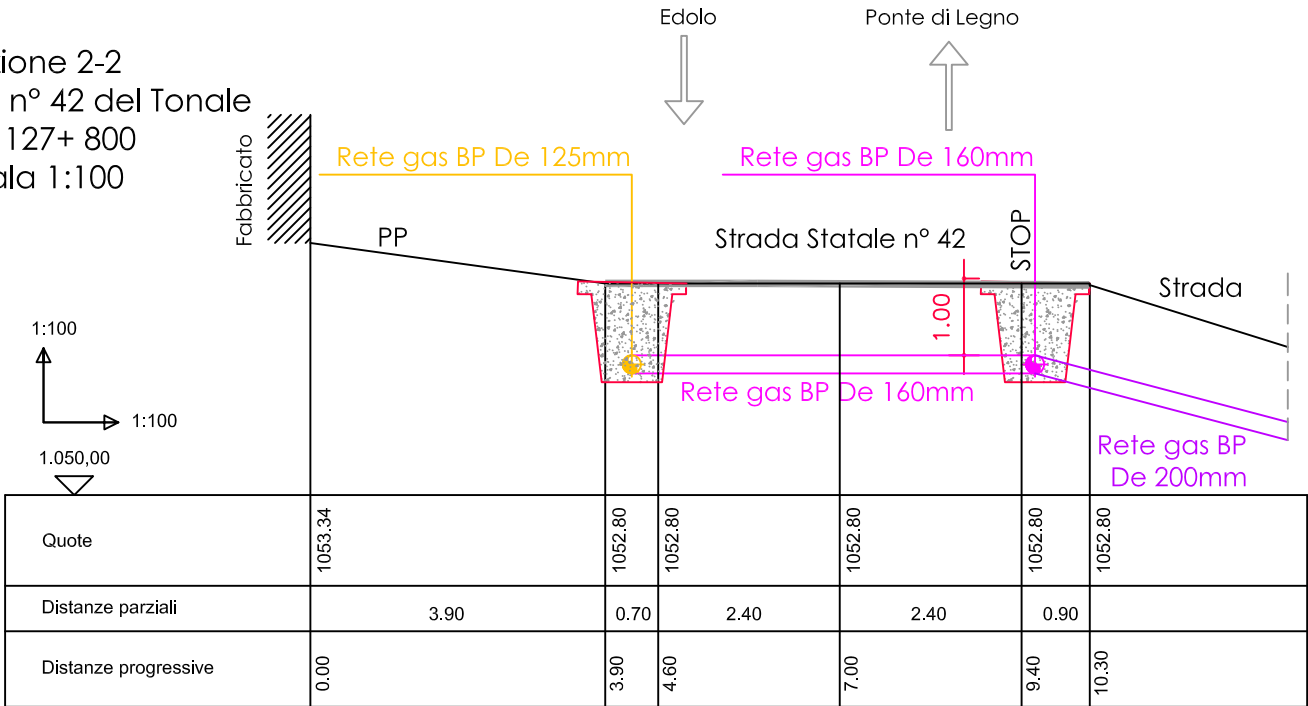
Sezione 1-1
 S.S. n° 42 del Tonale
 km 127+480
 Scala 1:100



Vista fotografica



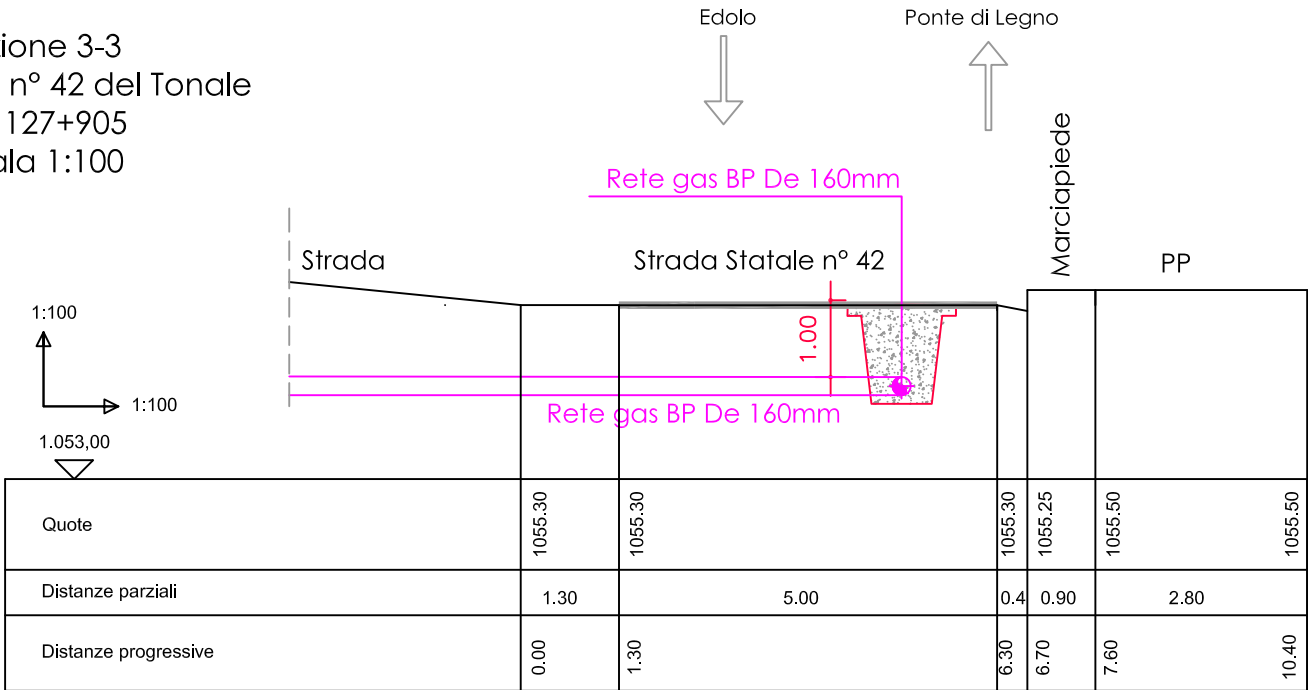
Sezione 2-2
 S.S. n° 42 del Tonale
 km 127+ 800
 Scala 1:100



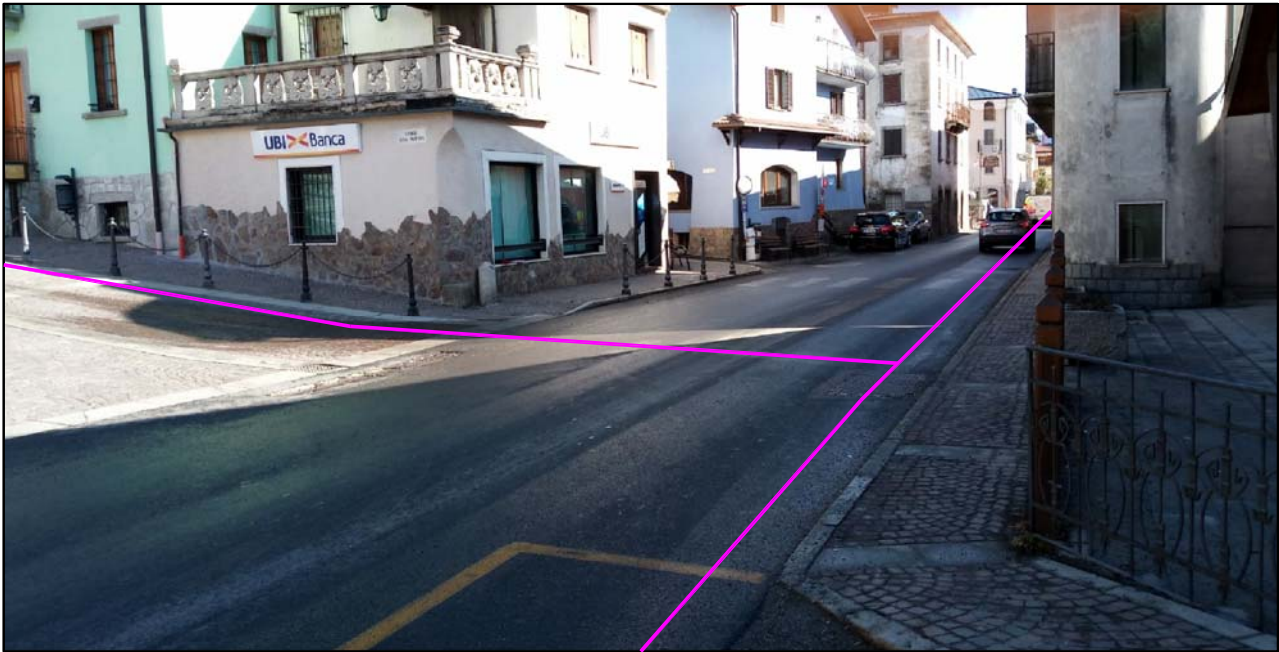
Vista fotografica



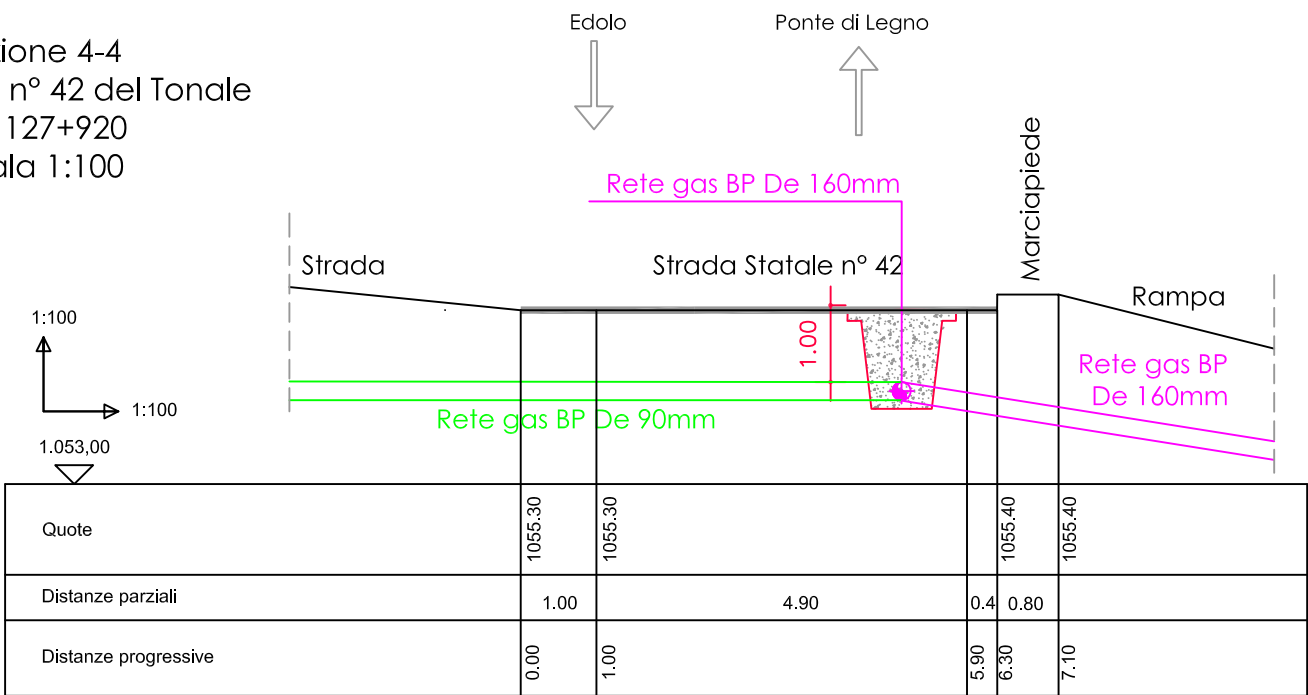
Sezione 3-3
 S.S. n° 42 del Tonale
 km 127+905
 Scala 1:100



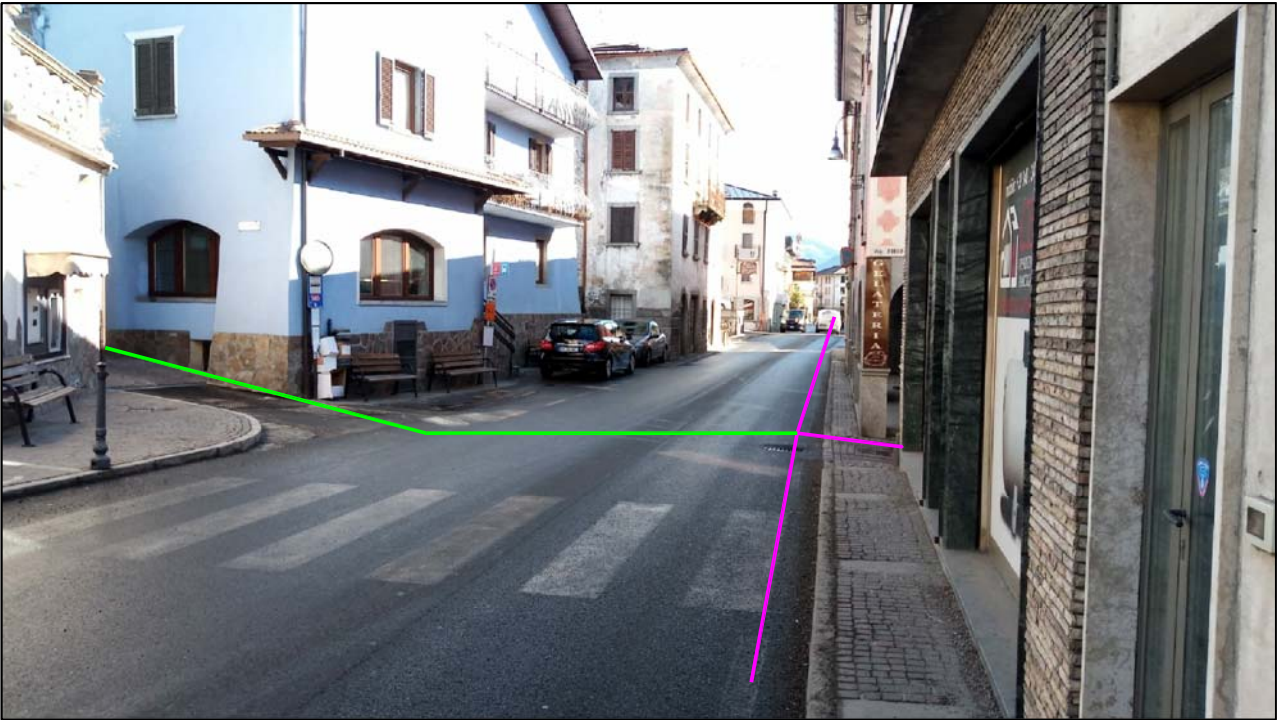
Vista fotografica



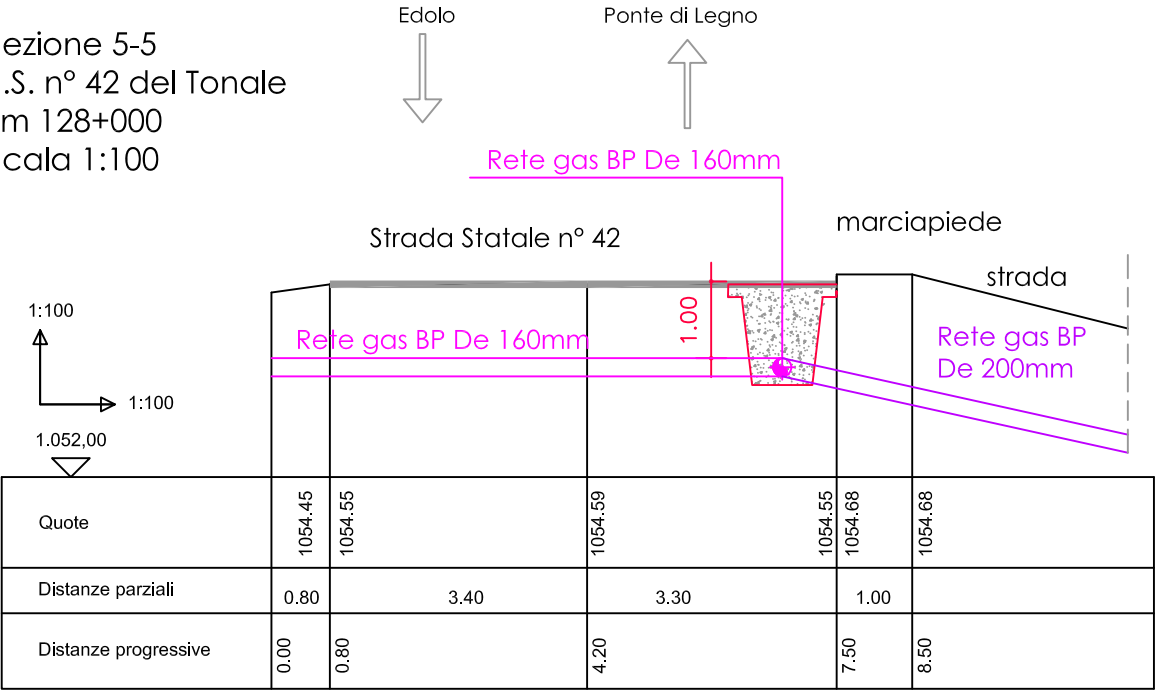
Sezione 4-4
 S.S. n° 42 del Tonale
 km 127+920
 Scala 1:100



Vista fotografica



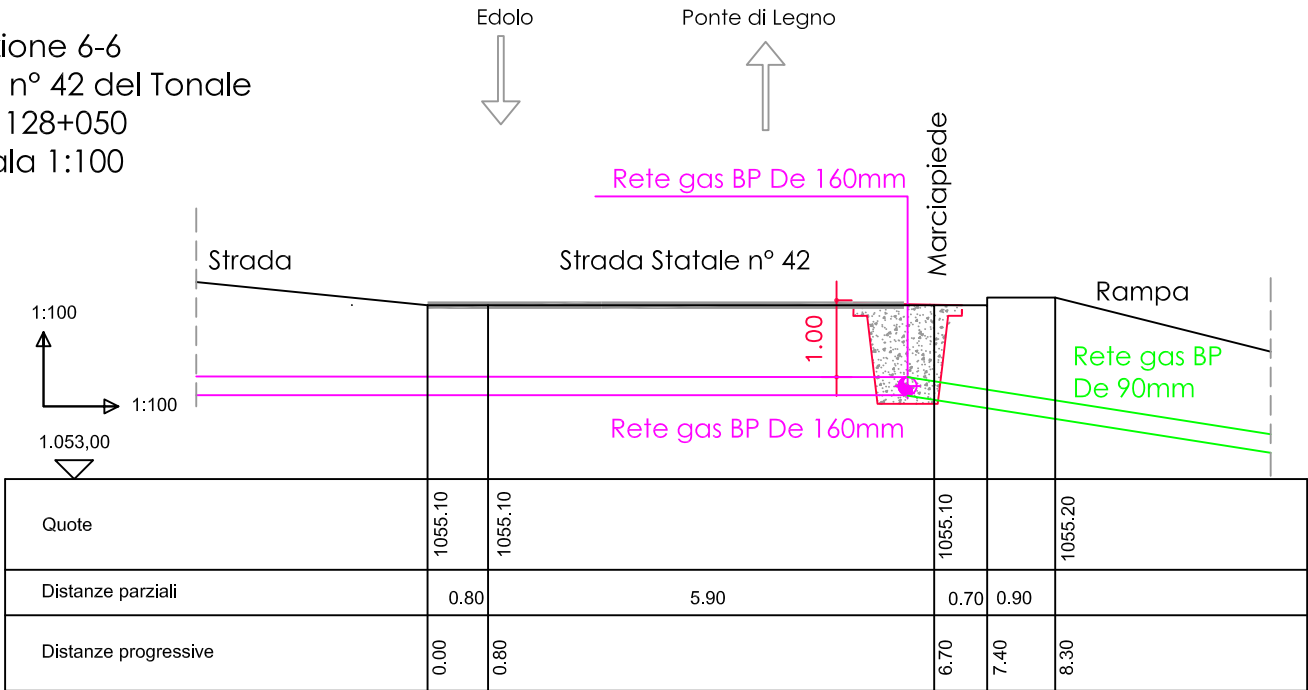
Sezione 5-5
 S.S. n° 42 del Tonale
 km 128+000
 Scala 1:100



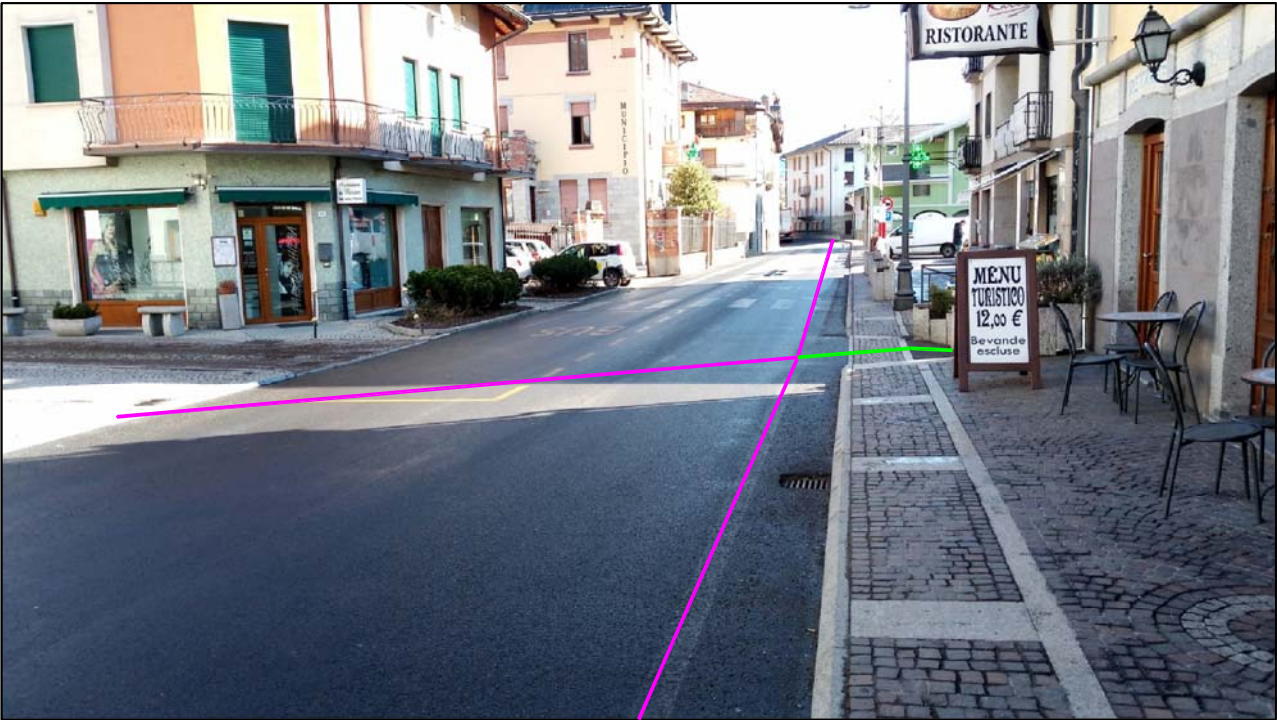
Vista fotografica



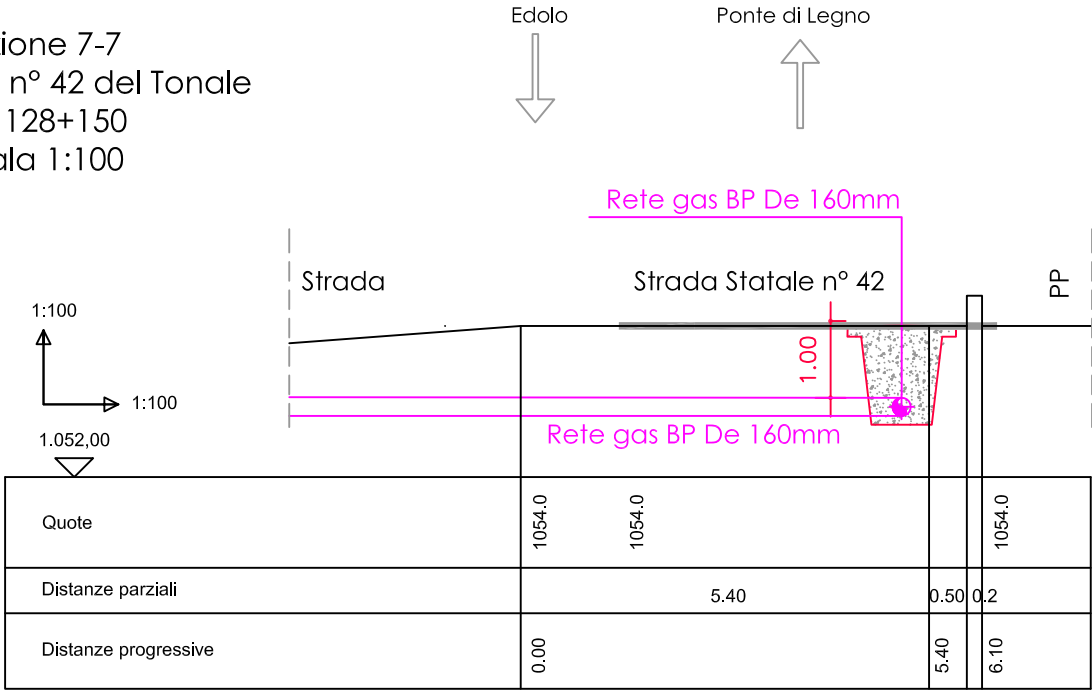
Sezione 6-6
 S.S. n° 42 del Tonale
 km 128+050
 Scala 1:100



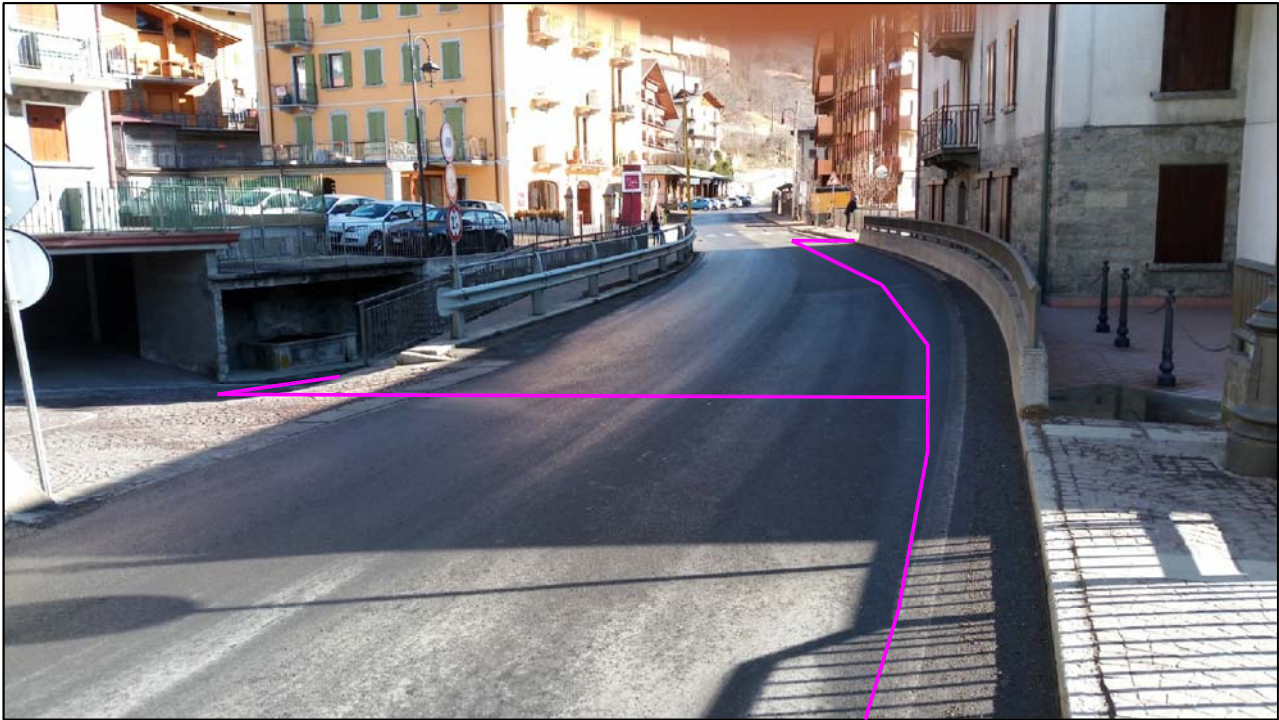
Vista fotografica



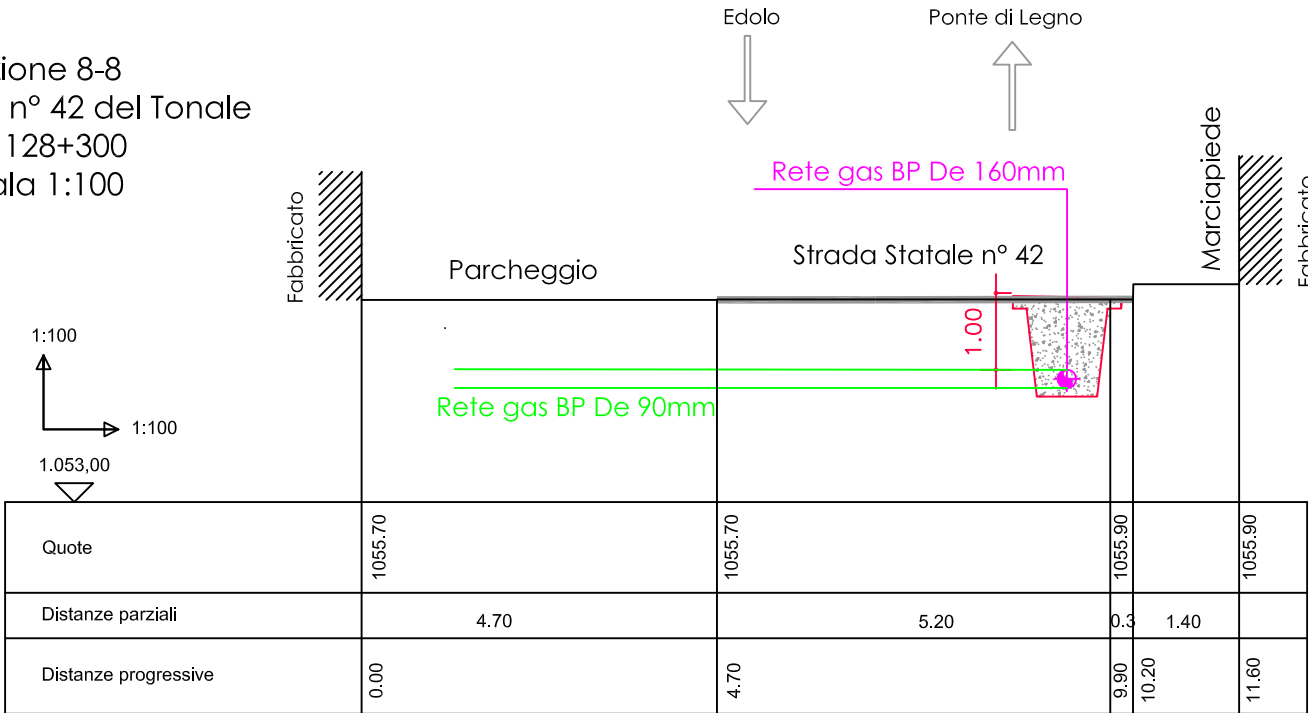
Sezione 7-7
 S.S. n° 42 del Tonale
 km 128+150
 Scala 1:100



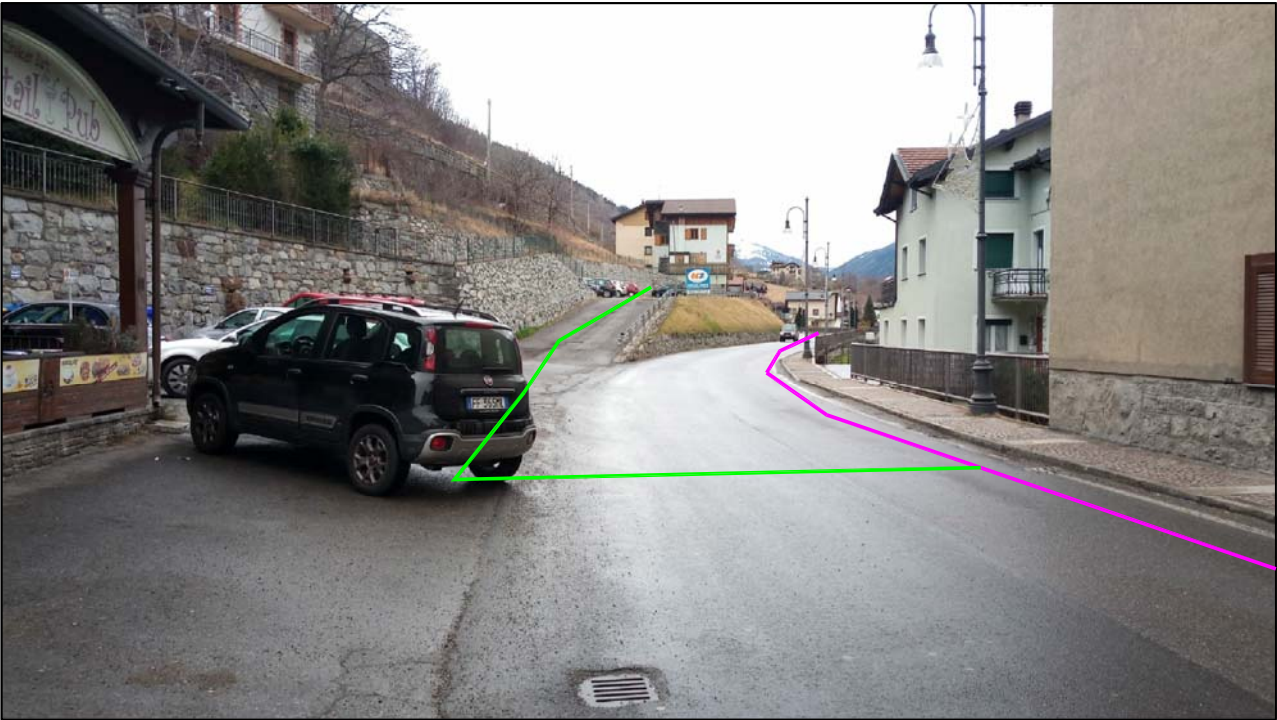
Vista fotografica



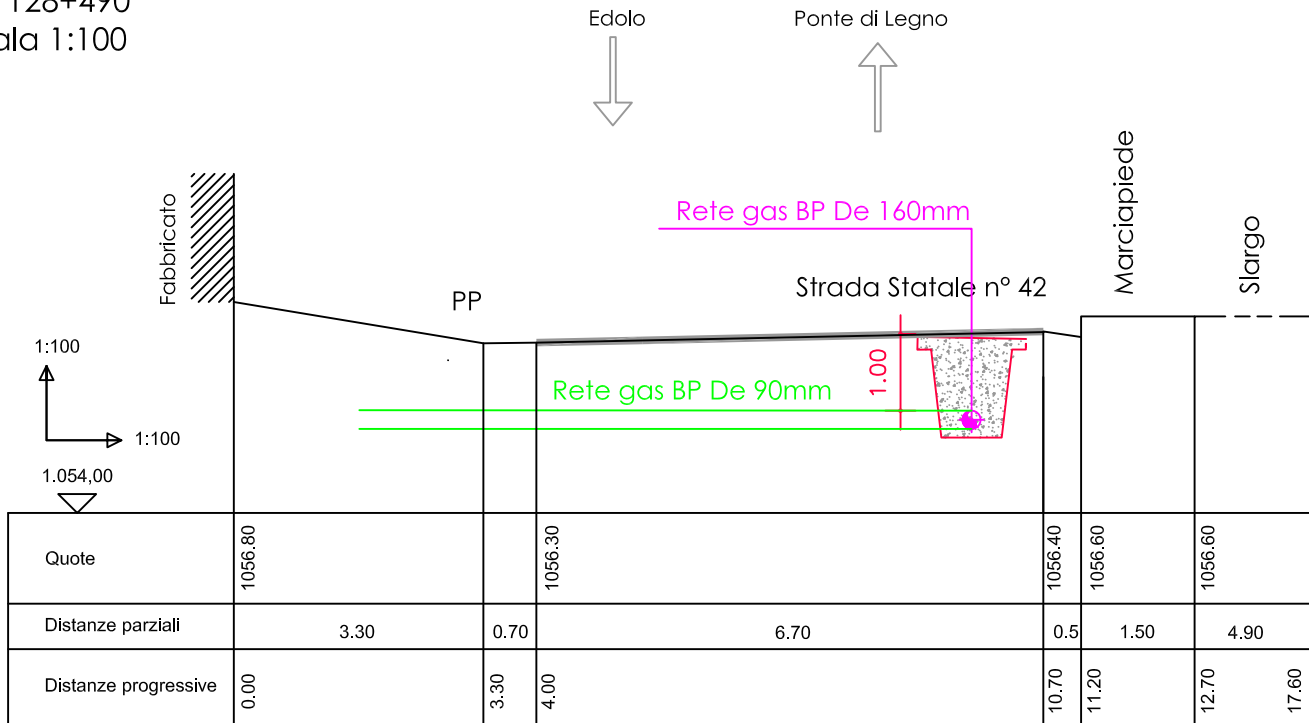
Sezione 8-8
 S.S. n° 42 del Tonale
 km 128+300
 Scala 1:100



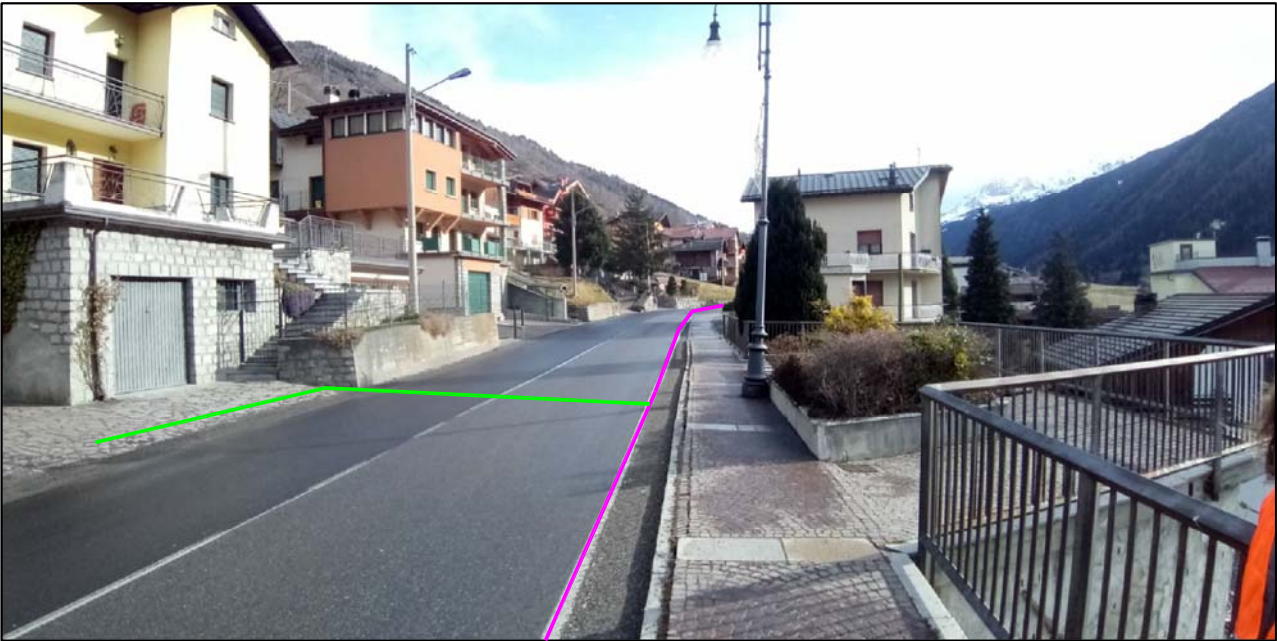
Vista fotografica



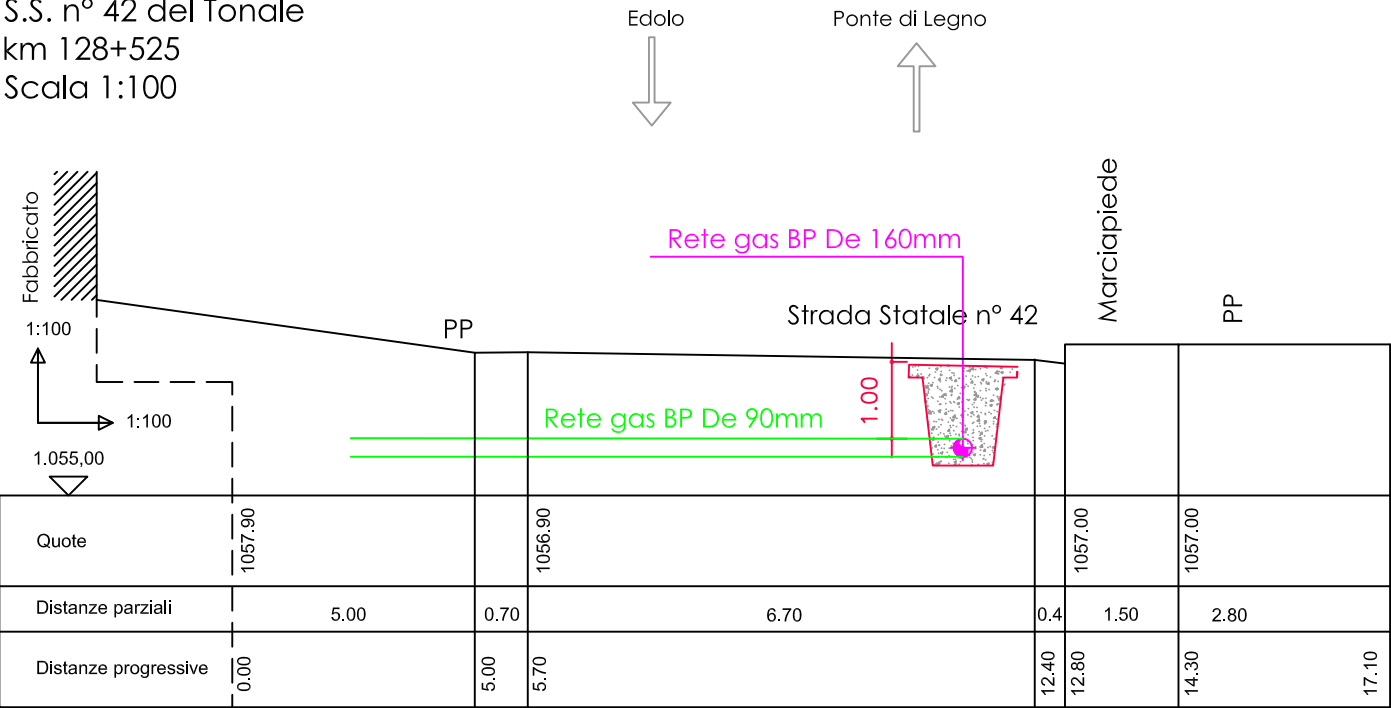
Sezione 9-9
 S.S. n° 42 del Tonale
 km 128+490
 Scala 1:100



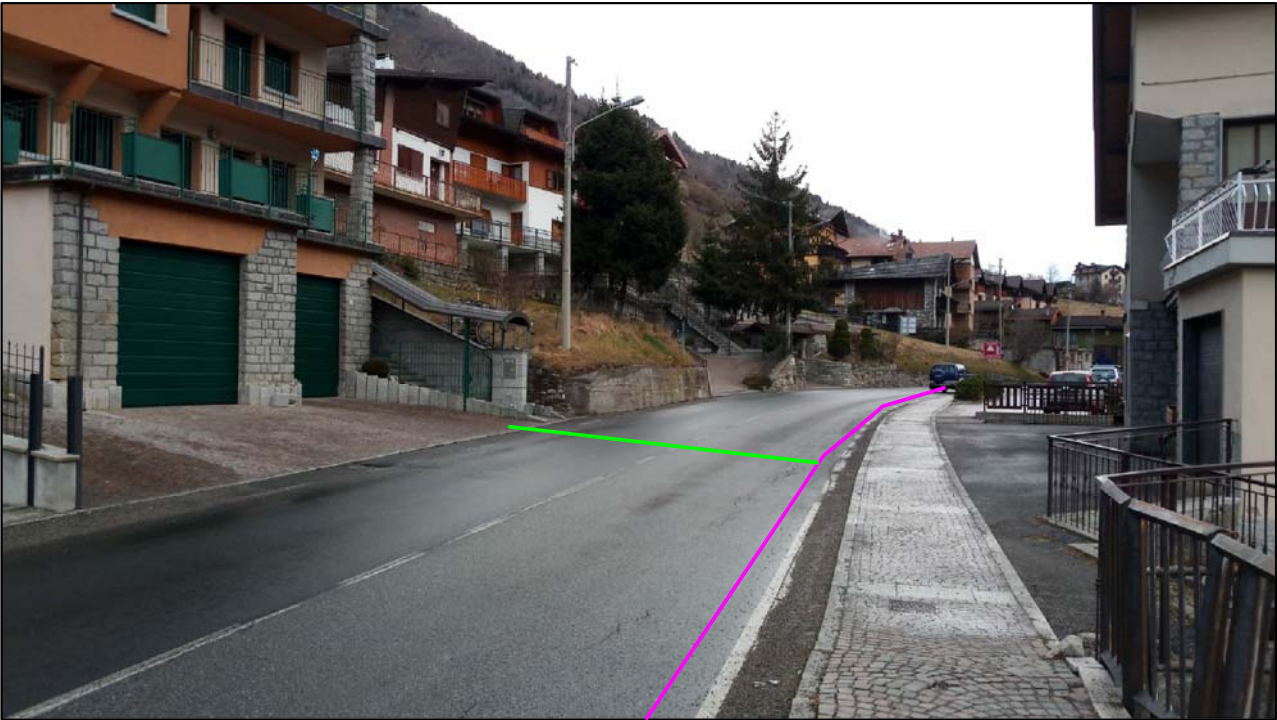
Vista fotografica



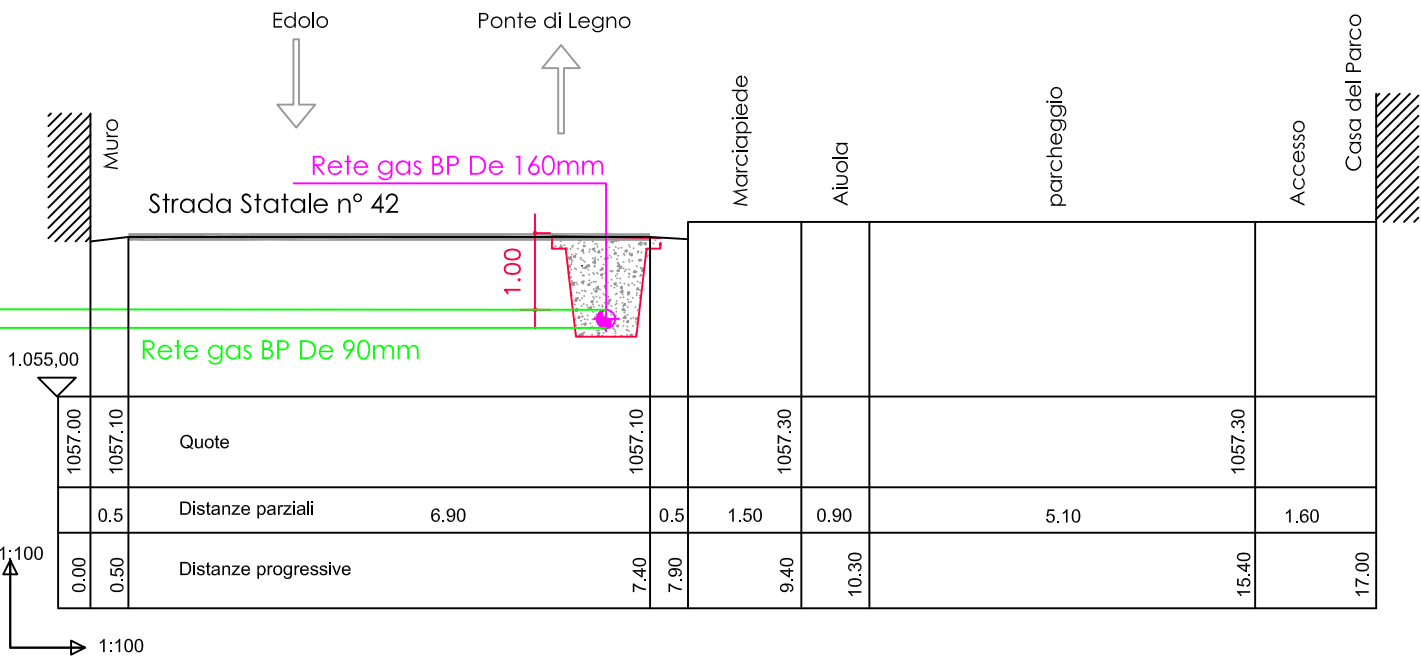
Sezione 10-10
 S.S. n° 42 del Tonale
 km 128+525
 Scala 1:100



Vista fotografica



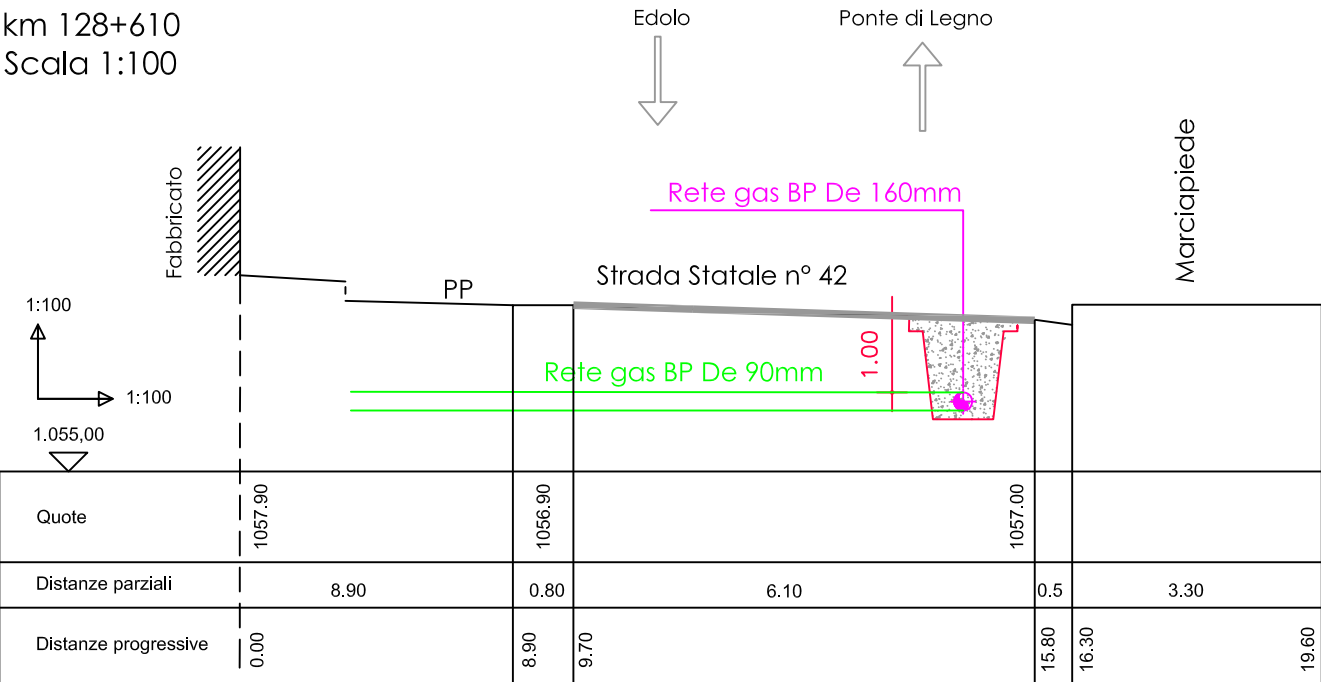
Sezione 11-11
 S.S. n° 42 del Tonale
 km 128+560
 Scala 1:100



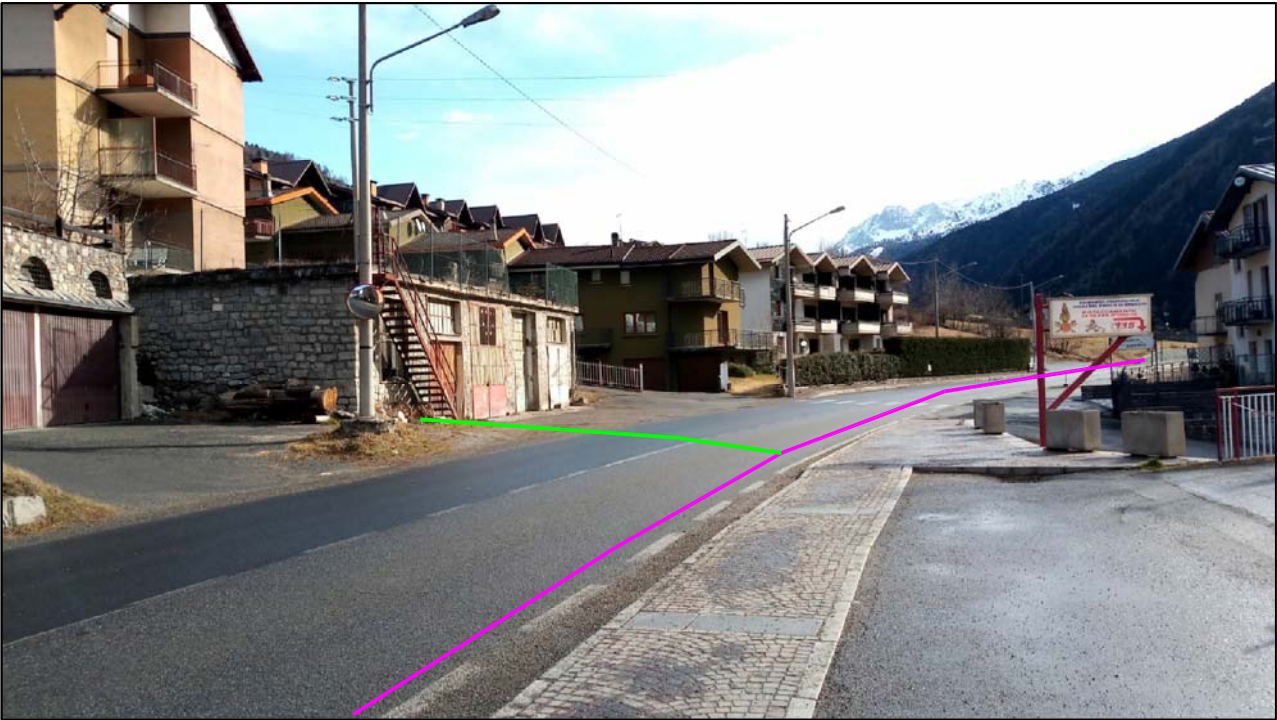
Vista fotografica



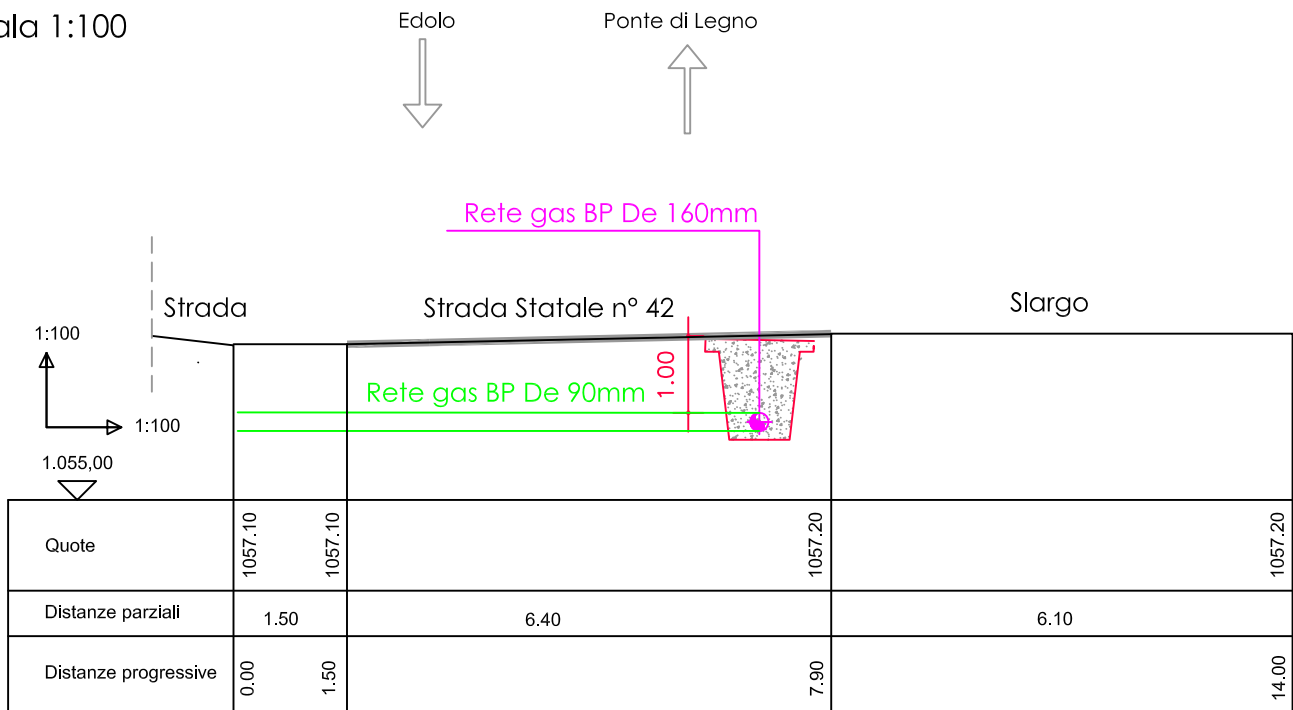
Sezione 12-12
 S.S. n° 42 del Tonale
 km 128+610
 Scala 1:100



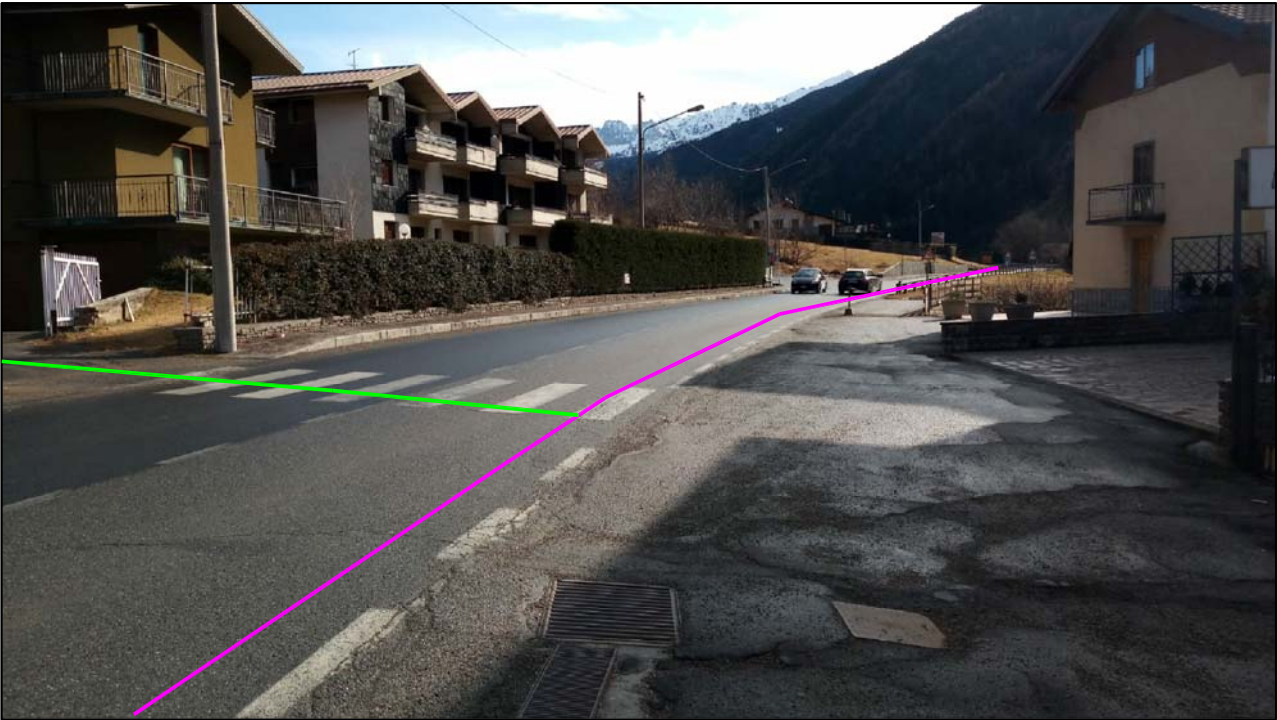
Vista fotografica



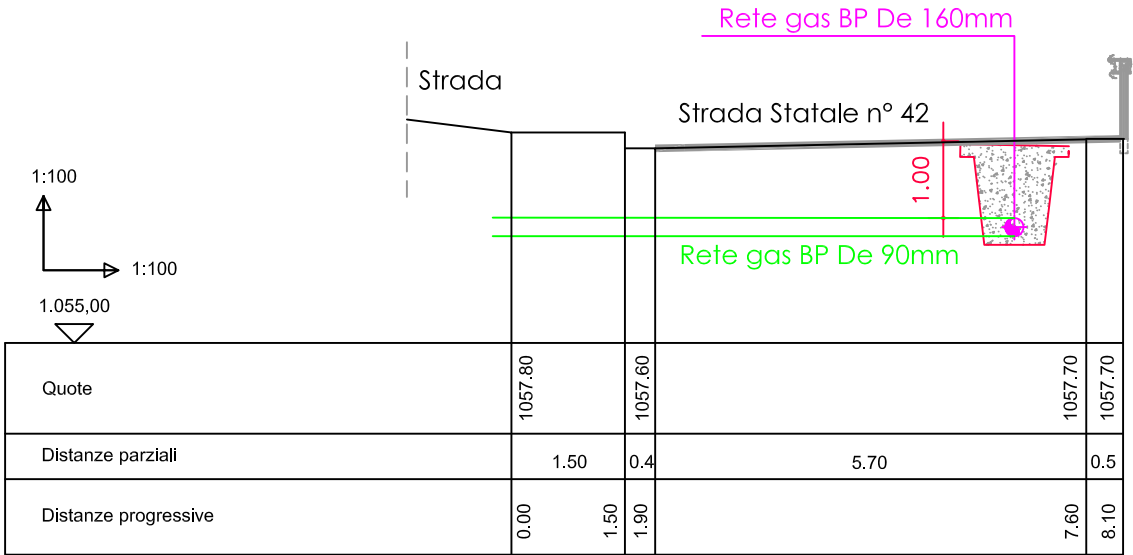
Sezione 13-13
 S.S. n° 42 del Tonale
 km 128+640
 Scala 1:100



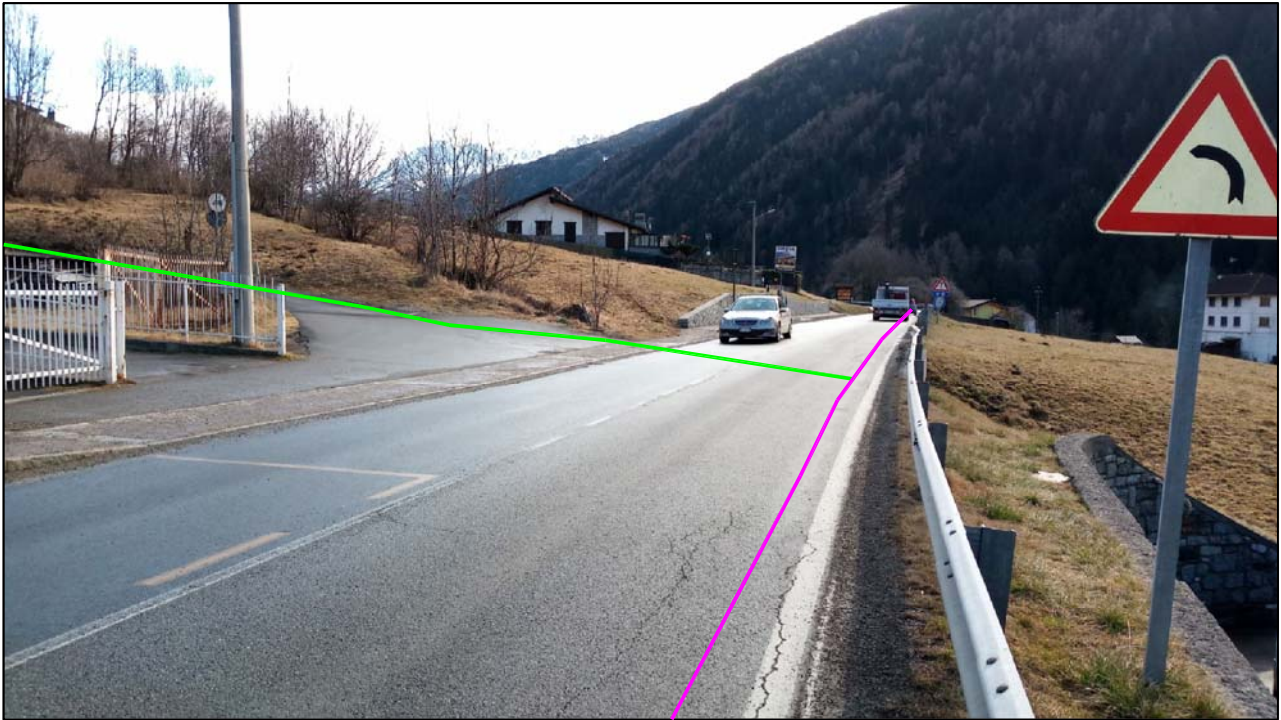
Vista fotografica



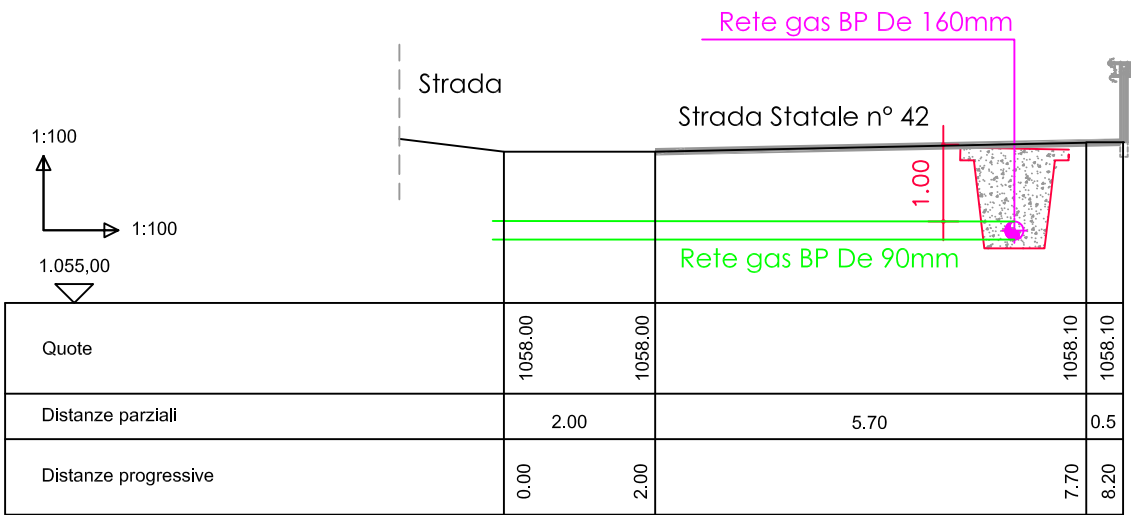
Sezione 14-14
 S.S. n° 42 del Tonale
 km 128+700
 Scala 1:100



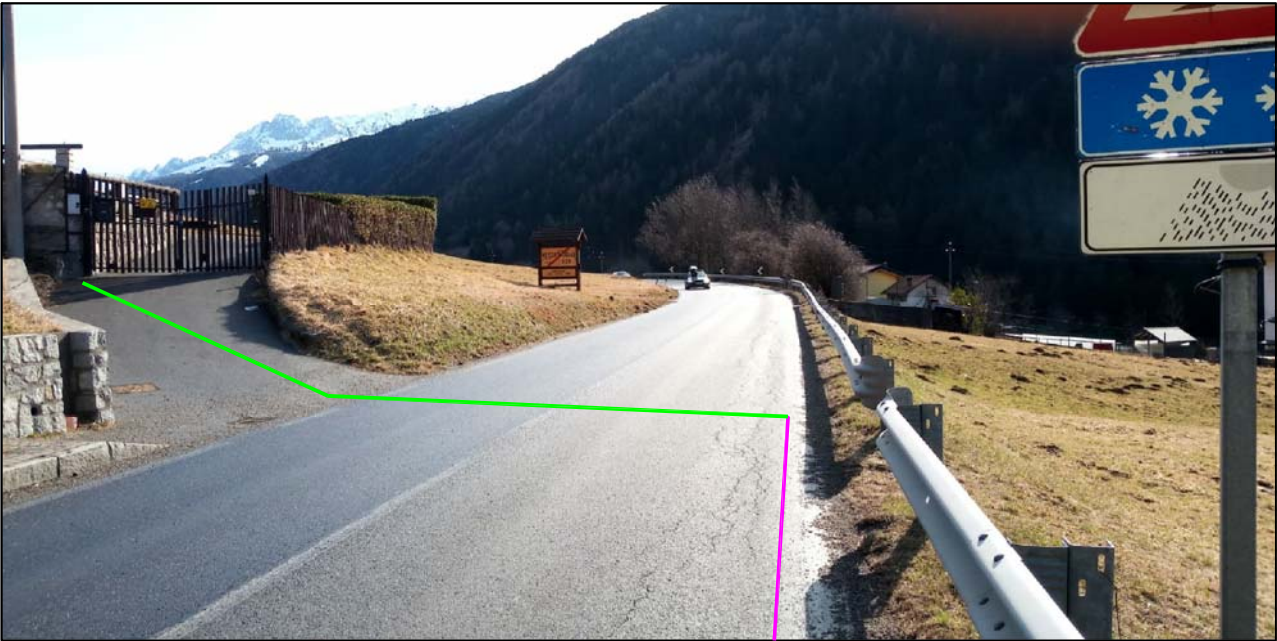
Vista fotografica



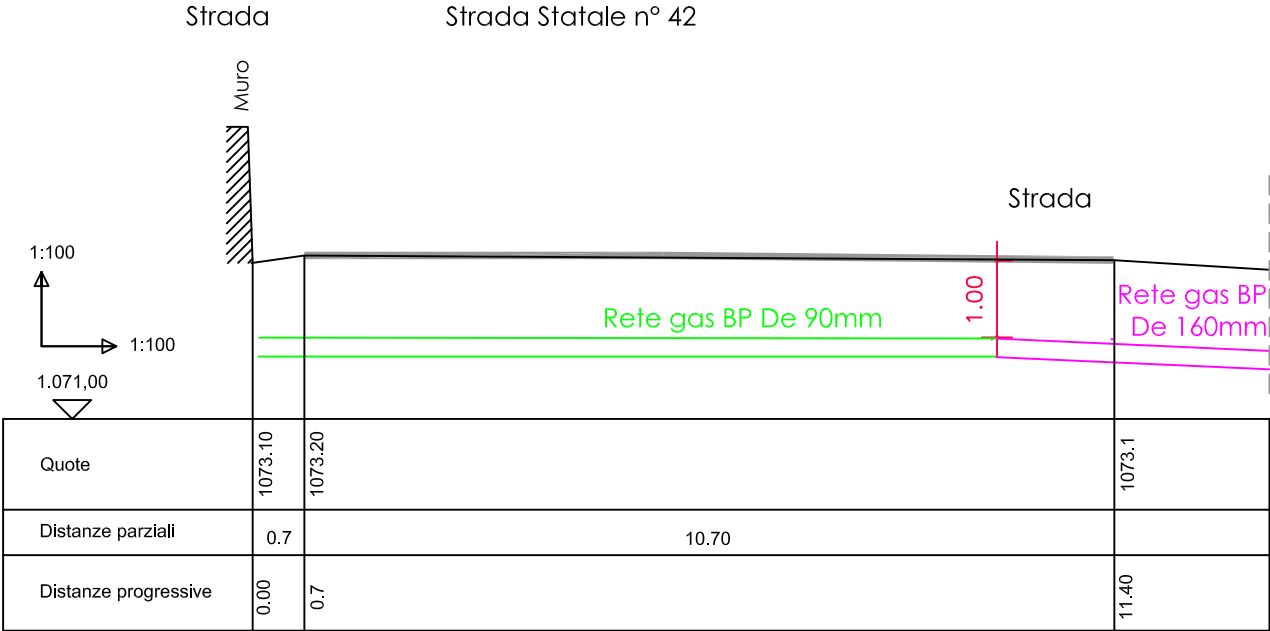
Sezione 15-15
 S.S. n° 42 del Tonale
 km 128+780
 Scala 1:100



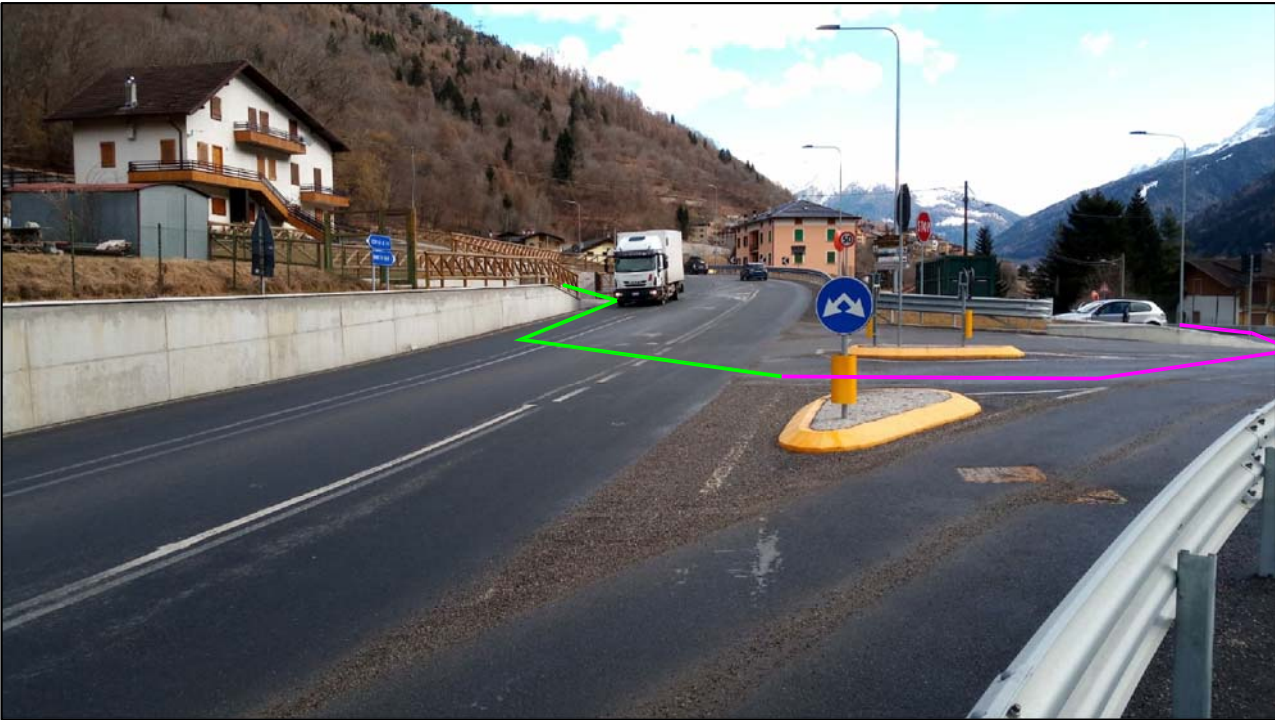
Vista fotografica



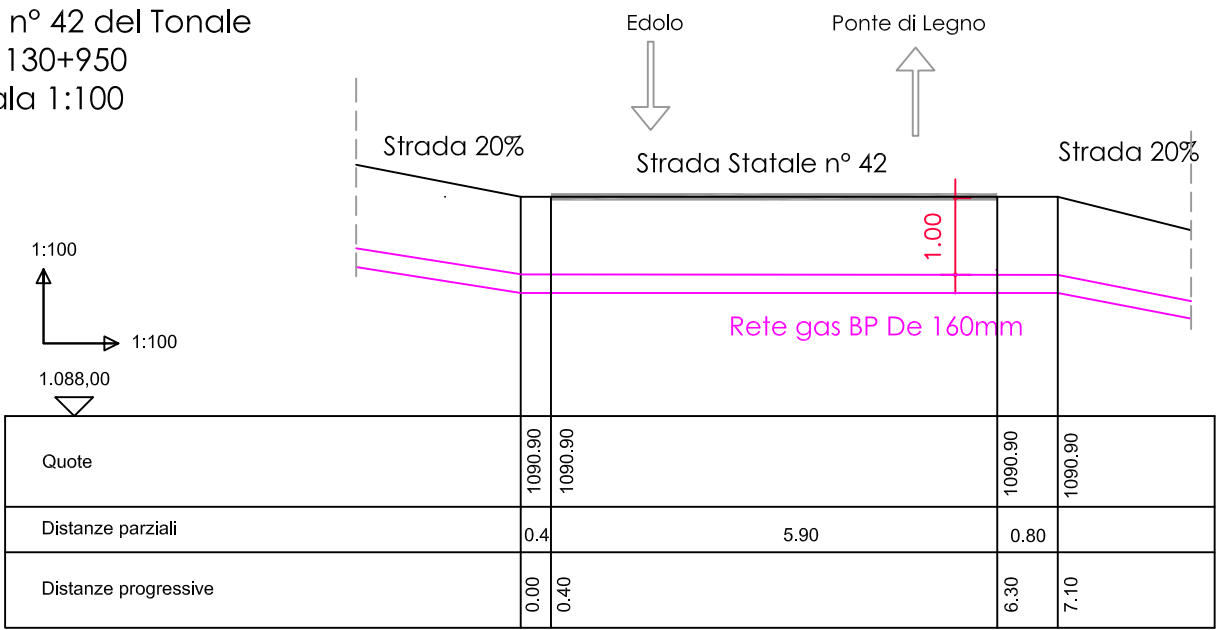
Sezione 16-16
 S.S. n° 42 del Tonale
 km 130+010
 Scala 1:100



Vista fotografica



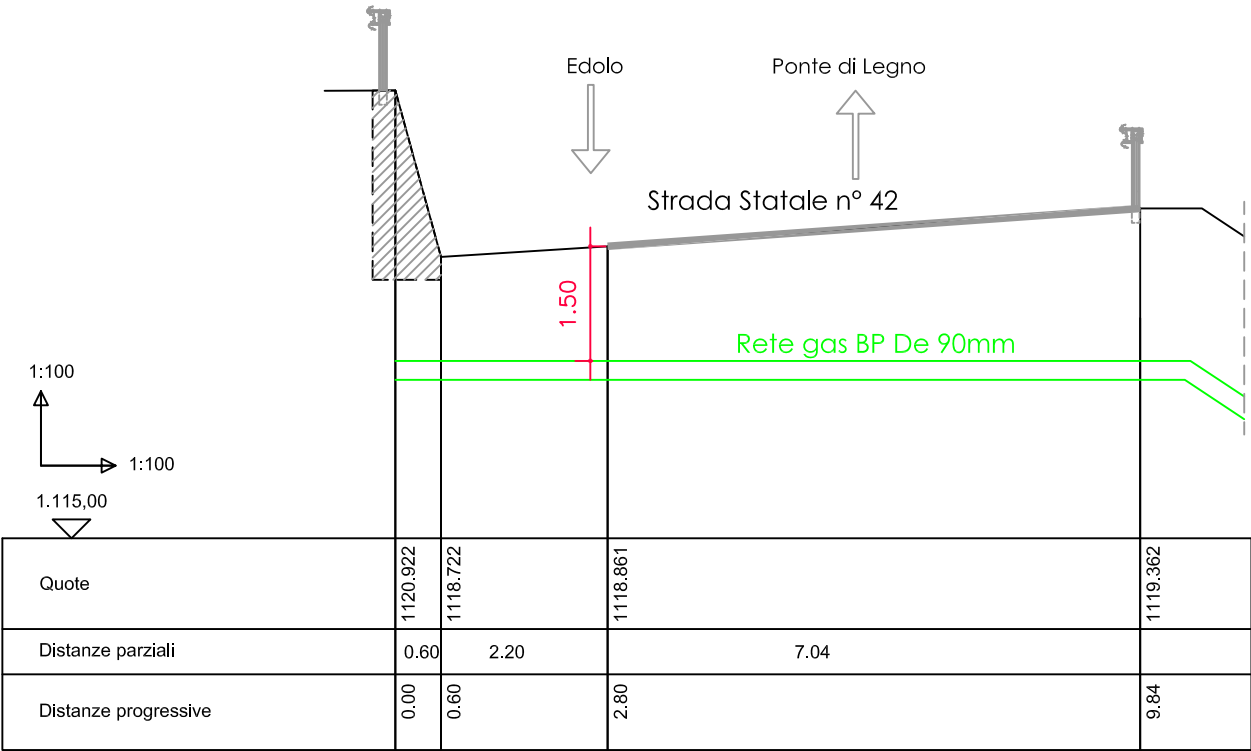
Sezione 17-17
 S.S. n° 42 del Tonale
 km 130+950
 Scala 1:100



Vista fotografica



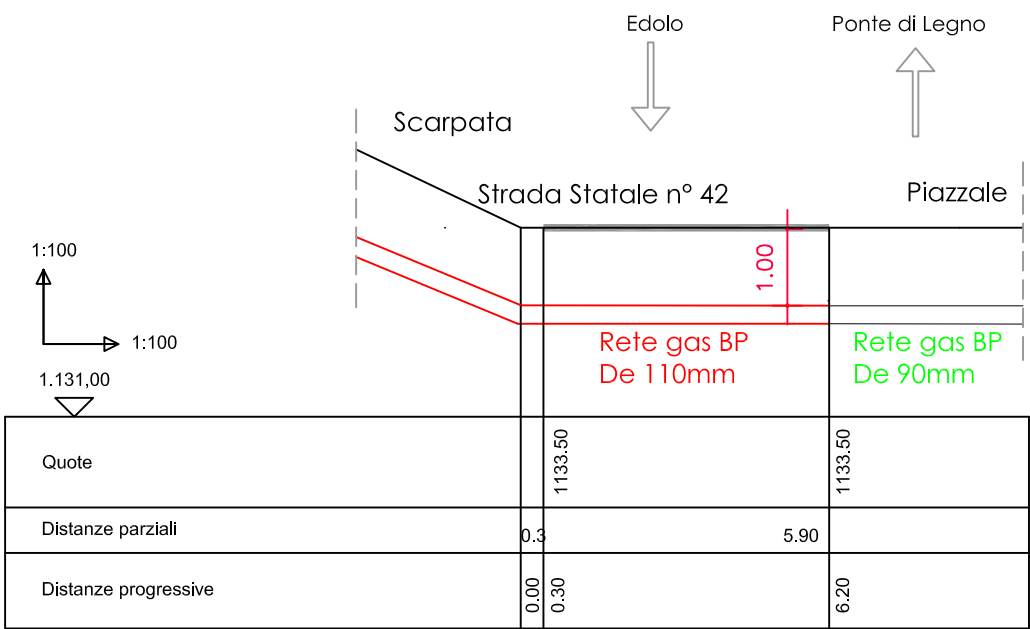
Sezione 18-18
 S.S. n° 42 del Tonale
 km 131+950
 Scala 1:100



Vista fotografica



Sezione 19-19
 S.S. n° 42 del Tonale
 km 132+580
 Scala 1:100



Vista fotografica

